



WESTERLY LIBRARY
& WILCOX PARK



2023-2024

Annual Report

TABLE OF CONTENTS

This is an interactive pdf, click the arrows to go to the next or previous page. To jump to a specific page click on any of the headings within the Table of Contents section below. To return to the cover page, click the header on the top of any of the following pages.



Board of Trustees	2
Note from the President	3
Note from the Executive Director	4
A Year in Review	5-18
Staff	19
Data Highlights	20
Volunteers	21-22
Incorporators	23-24
Gifts & Aid	25
Annual Fund Donors	26-31
Wilcox Society	32
We Remember	33



Mary Carol Kendzia
President



Ann Lain
Vice President



Peter B. Robinson
Treasurer



Maria Bernier
Secretary



Deborah L. Bell



Thomas F. Boll



Betty-Jo Cugini



Mojie F. Friel



Robert Gervasini



Mary Jo Girard



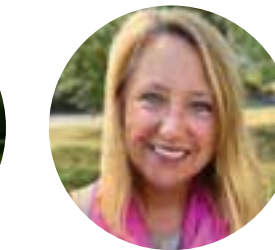
Deborah Harold



Gara LaMarche



William J. Miller, Jr.



Jennifer Obrey



Colleen Sullivan



Louis M. Toscano



Mary E. Scialabba
Town of Westerly
Ex Officio



Ben Tamsky
Town of Stonington
Ex Officio



Peg Murphy-Bright
Friends President
Ex Officio

Note from the Executive Director

Libraries and parks have served a significant role in improving lives and transforming communities for decades. They are places open to all levels of society with no expectation of something from visitors. They are not motivated or guided by profitability, ideology, or politics. They are living places that grow and evolve to serve as sources of information, civic engagement, entertainment, and wellness for their communities. And they foster local identity, provide value, and offer recreational, educational and social opportunities.

Westerly Library & Wilcox Park plays a significant role in the lives of its community members. It is a vital community space and a meaningful place for so many people offering a vibrant, welcoming library and park where anyone can learn, grow and connect.

This past year, we made considerable efforts to welcome every reader, dreamer, and learner through our doors AND to meet our users where they need us most. We offered hundreds of meaningful and fun programs as well as dozens of services and resources to empower and enrich our community. Through our core services and strategic actions, Westerly Library & Wilcox Park provides a welcoming community hub that allows for collaboration, creativity, learning, discovery, growth, and utter enjoyment.

I am deeply grateful to our amazing, talented staff for all their hard work, for the unwavering support of the Board, for the kindness of our volunteers, the generosity of our donors and sponsors, and our library and park users. I look forward to continuing our work to be a premier library and park for you and our community.

Sincerely,
Brigitte Hopkins, Executive Director



Note from the President

Dear friends of Westerly Library and Wilcox Park,

It's been a great year for the library and park, and the support, enthusiasm, and many contributions of every one of you have helped make this happen. Along with the guidance of our Executive Director, Park Superintendent, Board of Trustees, and staff the Association continues to thrive and earn its reputation as a jewel in the heart of downtown Westerly-Pawcatuck.

One of our major accomplishments this year was the renovation and reopening of The Cottage in Wilcox Park thanks to two very generous families, the Sculcos and Julians. The building will house an Artist-in-Residence program, open to all artists – visual arts, musicians, writers, performers, and the like – who have a project they wish to work on. The residency runs from two to eight weeks, depending on the needs of each individual artist.

A major building envelope study was completed on the library to identify potential structural concerns. As a building constructed in 1894, we know that maintenance and upkeep requires much time and investment as well as a special set of skills and approaches. This will be an ongoing project, and while many of the updates and repairs will not be visible to the public you can be assured that the library is getting the best care and maintenance available.

Wilcox Park is in better condition and more beautiful than ever. We are undertaking a major replacement project of the wood fencing that surrounds the interior of the park, with a special area opposite the bandstand that will feature a small seating area and hillside landscaping. Additionally, the park is studying the effects of climate change on the pond and evaluating ways to keep the water healthy and clean.

Finally, a shout-out is due to all the volunteers who keep Westerly Library and Wilcox Park in optimum operating condition, as well as our Incorporators and committee members, who serve as ambassadors to the public on behalf of the Association. You are a cherished resource and are valued beyond measure.

We look forward to the year to come as Westerly Library and Wilcox Park continues to grow and flourish in its service to the community.

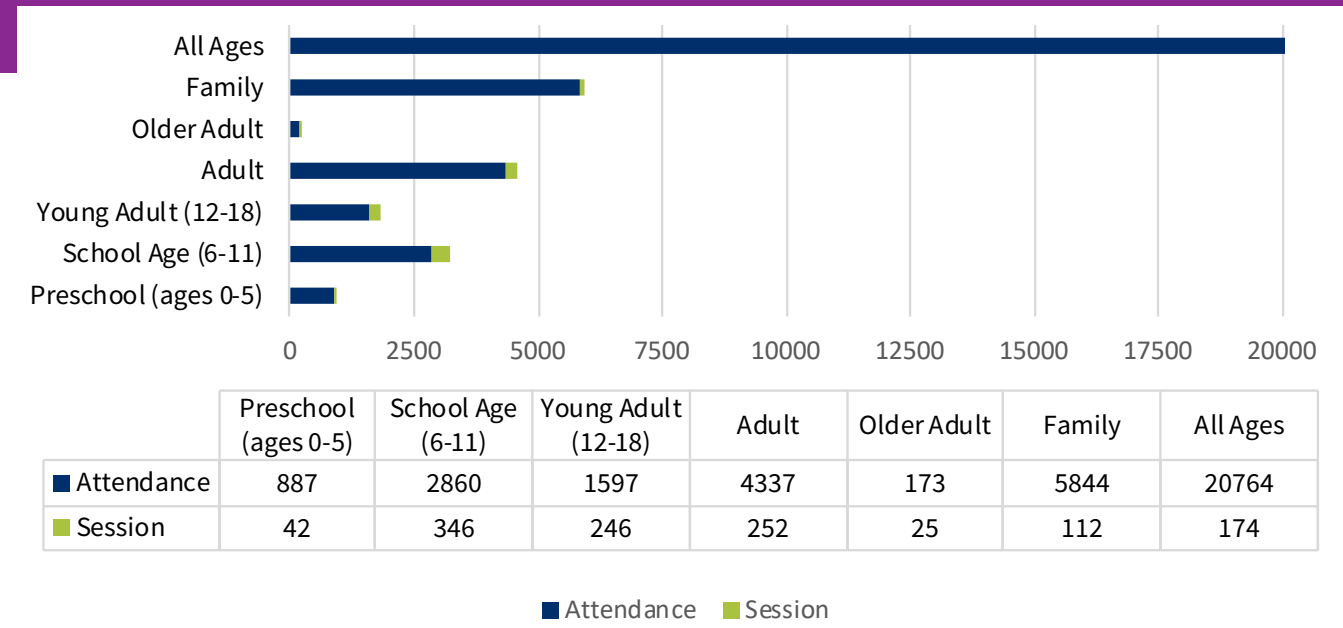
Sincerely,
Mary Carol Kendzia
President, Westerly Library and Wilcox Park

Mission

The mission of Westerly Library and Wilcox Park is to strengthen community and enrich lives by stimulating intellect and sparking imagination through access to literature, information, technology, nature, and the arts.

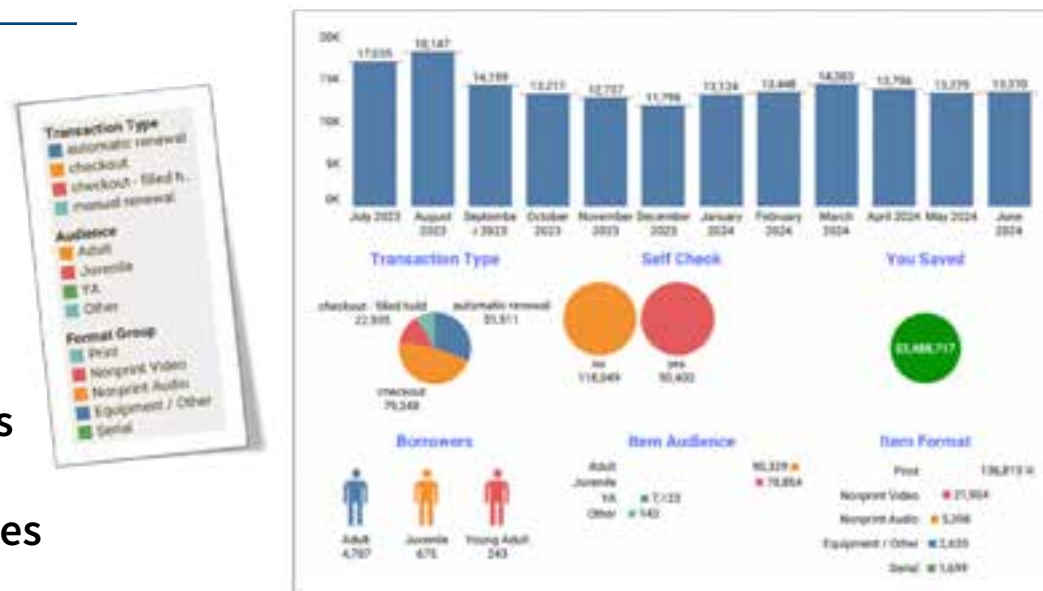
CORE SERVICES

Our core services make up the majority of our activity including circulation (checkouts of materials), program attendance, use of services and resources, patron assistance, and more. We monitor the number of patrons who use these services, how often these services are used, and feedback to ensure our offerings are meeting the needs of our community. Below is a snapshot of the 1,197 programs and events we offered this past year. As well as some of the services and resources we provide, for free, to our community members and visitors.



Programs

Provided **1,197** programs with a total of **36,462** attendees



Programs such as:

- Author talks in partnership with Bank Square Books such as a panel discussion with Deborah Goodrich Royce, Lara Ehrlich, Ann Hood, and Vanessa Lillie; talk with Carissa Broadbent; talk with Karen McManus
- Enriching storytimes with RI Ballet talking about their performance and the stories of the Nutcracker and Cinderella
- Clubs and Meetups such as Knit & Crochet, Cookbook Club, Film Club, and more



- Comic-Con which included:
 - A Cosplay Contest
 - A free Power-Up Pack from Wellbeing Collaborative to help you become your own superhero
 - Graphic novelist Alex Gaudins
 - Competitive gaming circles, including Super Smash Bros, Mario Party, and more
 - Table Top Games in Old Main Reading Room
 - Free subs courtesy of Jersey Mikes and free popcorn courtesy of Mystic Luxury Cinema

- Fall Fest & Pumpkin Stroll
- Community Connections
 - A day filled with support, guidance, and connections to valuable resources
 - Free haircuts were offered, vision testing by Lions Club, storytimes, family portraits and more
- Solar Eclipse Watch Party



- Fiddle N' Fun
- Dumpling Day
- Visits from Reptile Nook and Denison Pequot Nature Center





- Storytimes with Miss Sandy as well as guest readers including Miss United Sates and Dr. McCarten with Wood River Health
- Building a Story with Flowers
- Eco Explorers for Tweens
- Chinese painting with author-illustrator Regina Linke for Lunar New Year Celebration



Services



- Hoxie Gallery and its many exhibits including Banned Books and Annual Community Art Show, Jillian Barber, Polly Seip, Guy Daigle, members of the Artists' Cooperative Gallery of Westerly, New England Society of Children's Book Writers and Illustrators
- The Cottage and Artist-in-Residence



STRATEGIC GOALS

- Notary
- Mobile Printing
- Tech Help
- Homebound Delivery



- Youth Garden
- Exercise Classes
- Seed Library



Resources



- A Makerspace with a laser cutter & engraver, sewing machines, light table, media conversion equipment, and fiber crafts
- Comics Plus Database of comics and manga
- Library of Things which contains many items including some recently added such as:
 - Hand truck, Happy Light, Laser Measure, Light meter, Metal detector, Projector, Putt Partee, Stroller
- STEAM to Go Backpacks
- World Languages Collection with popular titles in languages such as Spanish and Chinese



GOAL 1

STRENGTHEN FINANCIAL SUSTAINABILITY AND ORGANIZATIONAL STABILITY

Every day, we work to maintain and improve all organizational assets to ensure our longevity in the community. We do this through development and prudent fiscal management, ensuring operational stability, and expanding our outreach. We help fund our operating budget and additional needs in many ways from Annual Fund, to grants, large private donations, and our generous Friends.



Allowing us to add new services, programs and resources such as:

- Hydroponics
- Charging Station
- Tweens Stow & Go Closet and Teen Space White Board
- Stackmap collection mapping tool that will help you locate a specific book in the library

Annual organization fundraisers as well as cohosted fundraising events such as

- Black & White Ball
- Sanderson Sisters Halloween Spooktacular
- Garden Market Fair
- Jack Spratt Talk at Lamphear Livery



- Proper staffing is critical to organizational stability and we have the best!



GOAL 2

BE RESILIENT BE ADAPTABLE TO CHANGE

Resilience and adaptability are important for all of us in a time of unrelenting change at an unparalleled pace. Being agile when it comes to predicting, withstanding, adapting to, and recovering from whatever “change” we are faced with is imperative so that we can continue doing what we are doing. providing the space, programs, services, and resources our community has come to expect.

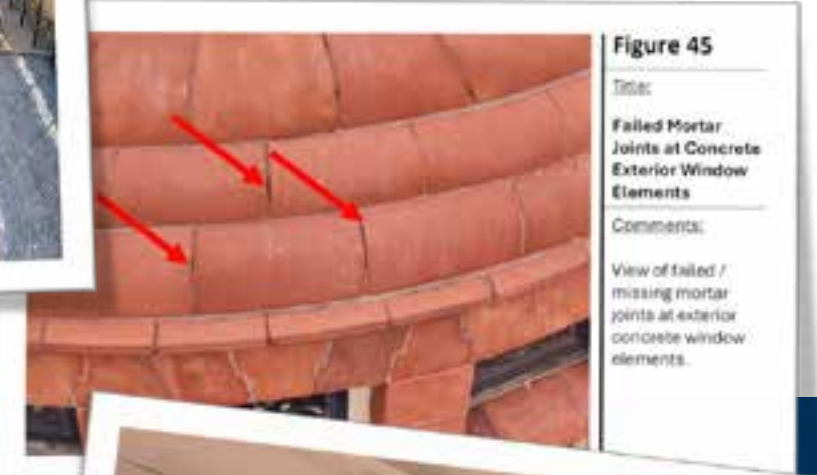


Figure 45
 Title:
 Failed Mortar Joints at Concrete Exterior Window Elements
 Comments:
 View of failed / missing mortar joints at exterior concrete window elements.



Figure 77
 Title:
 Tower Roof Soffit
 Comments:
 View of failed tower roof soffit.

- Funded a Building Envelope Study done to see where the building was vulnerable so that we can be proactive with repairs and upgrades
- Planted native plants on the Esplanade and Pollinator Garden
- Improved drainage in the park holding beds

GOAL 3

BUILD LIFELONG RELATIONSHIPS

We work on forging and strengthening good relationships with everyone throughout their entire lives with us. From the patrons we interact with each day to the collaborations and partnerships we have with local businesses and organizations.

- Friends of Westerly Library & Wilcox Park Annual Book Sale
- La Befana with Dante Society
- Funda Fest with RI Black Storytellers
- Chorus of Westerly Pre-Concert Lecture: Mozart Mass in C Minor
- Get Your Bike Ready for the Season with Remys Bikes
- Senior Day at the YMCA



Building relationships with donors and volunteers:

- Honoring with Annual Volunteer Luncheon and Gold Leaf Event
- Providing donor tours both of the library and in the park



With the community and our Annual Pride in the Park:

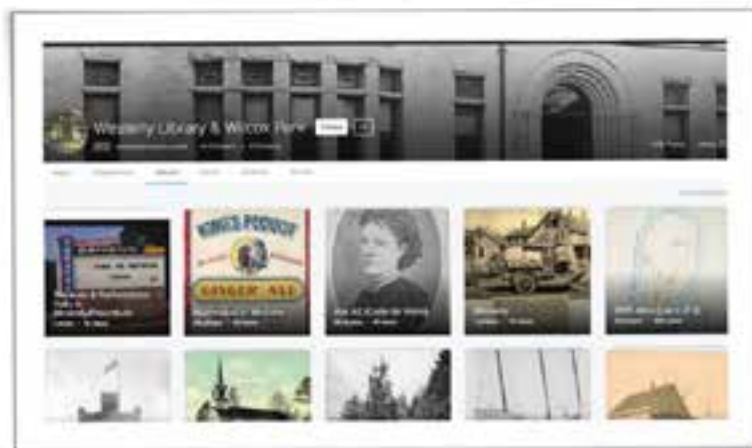
- United Congregational Church of Westerly
- Wood River Health
- Pompelo Gelato
- Wellbeing Collaborative
- Rhode Island Regional Coalitions
- Westerly Pride Club
- Stonington Pride



GOAL 4

SERVE AS THE ACCESS POINT TO RESOURCES THAT CONTRIBUTE TO ENHANCING QUALITY OF LIFE

Providing a connection to information and resources is just one of the many things we do to enhance the quality of life for our community members.



- Teaching our youth how to grow food and donating it people in need
- Having a person help you during stressful times such as our Community Resource Advocate or Mental Health Advocate
- Enjoying the outdoors with a sound bath
- Accessing the past – Westerly Yearbooks, and local interest photos



We have many helpful resources that patrons have access to that cannot be captured with an image:

- General computer tasks, including;
 - Printing, Emailing, Scanning, Faxing
 - Basic Computer Skills
 - File management and organization, Basic interactions, Word Processing
 - Internet navigation and searching
 - Job Searching, Resume writing and review
 - Navigating Government Websites
 - Voter registration, DMV appointments and forms, Filing for Unemployment
 - New Device Setup and familiarity
 - Smart Phones, Cellphones, Smart Watches
 - Accessing Online Services
 - Library eBooks and eAudio Books, Streaming Services, Healthcare portals

Westerly Library & Wilcox Park is a meaningful place for so many people, it provides peace and respite, a place to connect with friends, time to learn and grow, and so much more. We strive to provide the highest quality spaces and experiences for our patrons in a welcoming environment. Based on feedback over the past year, it appears we are doing a rather decent job:



Administration

Kelli Butler, Director of Marketing & Communications
Sara Ross Clark, Business Office Manager
Brigitte Hopkins, Executive Director
Stacey Jackson, Director of Development
Bill Lancellotta, Assistant Director
Elizabeth Rannenber, Data Entry Specialist
Amanda Wagner, Marketing & Outreach Manager

Park

Brian McGregor, Groundskeeper
Martin Neiberg, Groundskeeper
Alan Peck, Park Superintendent
Lee Sadosky, Groundskeeper
Trevor Tetlow, Groundskeeper

Public Services

Keara Bergey, Public Services Associate
Brianna Botelho, Public Services Associate
Meghan King, Public Services Associate
Maria Loughran, Technology & Innovation Coordinator
Kristen MacLeod, Head of Public Services
Evelyn McLaughlin, Technology Associate

Youth Services

Gina D'Ambrosio, Youth Services Associate
Mel Fricchione, Kids Librarian
Rebecca Graebner, Head of Youth Services & Education
Ben Green, Tween Librarian
Casey Howley-Brigham, Youth Services Associate
Colleen King, Teen Librarian
Claire Morgan, Youth Services Associate

Adult Services

Caroline Badowski, Head of Adult Services
Anais Cunningham, Adult Services Associate
Kim Ihne, Collection Management Associate
Debbie Northup, Adult Services Associate
Cassie Skobrak, Adult Services Librarian
Colleen Walsh-Jervis, Collection Management Associate
Nina Wright, Local History Librarian

Facilities

Rob Gizzarelli, Facilities Manager
Teresa Peck, Custodian

On-Call

Nick Maynard
Sue Marelli



302 DAYS OPEN
2,980 HOURS ANNUALLY
227,178 ANNUAL VISITORS

36 STAFF MEMBERS

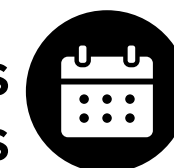


15,003 ACTIVE CARDHOLDERS
5,705 UNIQUE BORROWERS



200 VOLUNTEERS DONATED
5,534 TOTAL HOURS=\$195,800

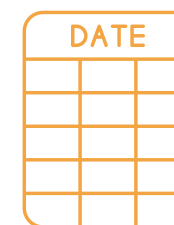
1,197 PROGRAMS
36,462 ATTENDEES



29 PUBLIC COMPUTERS
18,301 COMPUTER USERS
12,716 COMPUTER USE HOURS
12,029 WIRELESS SESSIONS



240,015 COLLECTION USE
168,838 TOTAL TRANSACTIONS

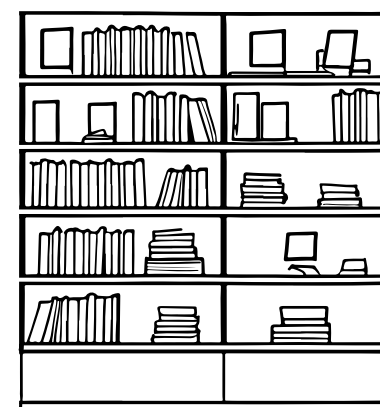


E-CONTENT & MATERIALS INCLUDING

HOOPLA/KANOPY/COMICSPLUS/EZONE (LIBBY)

71,441

HOLDS FILLED
LENDING TO: 31,814
BORROWED FROM: 29,561



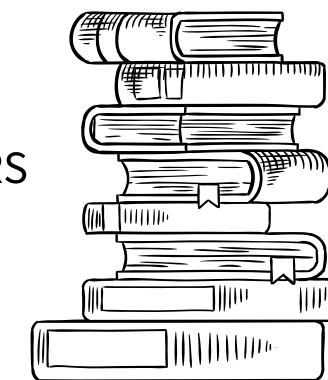
20,458 LIBRARY USER
QUESTIONS ANSWERED



1,050 STUDY ROOM USERS



WEBSITE VISITS 257,011



We are forever grateful for our volunteers, who dedicate so much time and talent to make us who we are!

- | | |
|------------------------|-----------------------------|
| Cindy Adam | Erin Collins |
| Cindy Anderson | Alex Connolly |
| Donna Anderson | Richard Constantine |
| Paula Arcarese | Mary Cooper |
| Garrett P. Babij | Margaret Corini |
| Beth Bachert | Andrea Cota |
| David R. Bailey | Rob Cozzolino |
| Nancy M. Balentine | Kathleen Crowley |
| Margaret S. Barclay | Betty-Jo Cugini |
| Sandra C. Barkley | Claire Dalidowitz |
| Kimber Barnett | Richard Dalidowitz |
| Jane Barstow | Lisa Dallas |
| Shirley Bartucca | Kay Daniele |
| Deborah Bell | Jane I. Dawson |
| Robin Benoit | Chantal Devine |
| Bob Benson* | Michael Devine |
| Maria Bernier | Eileen Diaz |
| Casey Blanchette | Cameron Dinwoodie |
| Suzanne Blum | Mildred Dion |
| Thomas F. Boll | Raymond Dolan |
| Bob Bowes | Jeanne Doucette |
| Jackson Brennan | Deborah Downie |
| Lilia Brower | Denis Duclos |
| Linda Brown | Diane Duclos |
| Sophia Buck | Marjorie H. Duerr |
| Margit Burgess | Ellen Dumouchel |
| Erin Call | Susan M. Dumouchel |
| Laurie Callaghan | Margaret L. Earle |
| Robert "Buz" Callaghan | Dana Emery |
| Andrea Carey | Devyn Everett |
| Sandi Carmichael | Wendy Faiss |
| Alec Castagno | Barbara Fallon |
| Bonnie Castellani | Susan Ferreira |
| Frances A. Cawley | Tim Flanagan |
| Jennifer Chaffiotte | Brenda Flemming |
| Jonathan Chan | Brenda Foberg |
| Caden Chicas | Leslie Fonsh |
| Marie Clark | Lisa Frankes |
| Barbara Clark-Greene | Katelyn Freitas |
| Elizabeth Coffey | Mojie F. Friel |
| Steven Coffey | Friends of Westerly Library |
| Toby Coit | & Wilcox Park |

- | |
|--------------------|
| Christopher Fusaro |
| Margaret Fusaro |
| Gregg Gabinelle |
| Alice Gervasini |
| Robert Gervasini |
| Mia Giorno |
| Mary Jo Girard |
| Katie Goode |
| Mary Goodman |
| Stephen M. Greene |
| Theresa Gregal |
| Linda D. Grimes |
| Doryanne Hamel |
| David Hannon |
| Sheryl Hanson |
| Deborah Harold |
| Scott Harold |
| Karie Hayes |
| Sandy Hayes |
| Susan Hayes |
| Sarah Hazelton |
| Averie Hindle |
| Lisa Hoffman |
| Rob Holland |
| Elaine Hovey |
| Melissa Hughes |
| Nancy B. Hughes |
| Larry Hunter |
| Amanda Imbriglio |
| Christine Julian |
| Kenneth Julian |
| Gail Kahover |
| Beth Kalunian |
| Arleen Kaur |
| Harmeet Kaur |
| Bethany Kearsch |
| Mary Carol Kendzia |
| Kaylee Kleinkauf |
| Denise Kowalewski |
| Gary Kowalewski |
| Joshua Krupka |
| Monique Krupka |

- | |
|----------------------------|
| Uma Kuruganti |
| Ann Lain |
| Gara LaMarche |
| Heather Langlois |
| Catherine Larsh |
| Judith A. Larzelere |
| Suzanne Lemp |
| Mary Lennon |
| Jane Lionelli |
| The Lions Club of Westerly |
| Marguerite R. Long |
| Pamela Madigan |
| Ellen L. Madison, Ph.D |
| Robert Madison |
| Jane Mara |
| Michael Marelli |
| Carol H. Maynard* |
| Rita D. Mazur |
| Steve McAllister |
| Heather McGregor |
| Diane McQuade |
| Austin Menta |
| Corliss Merkel |
| William F. Meyer |
| Bill Miller |
| Sharon Morgan |
| Lisa Mueller |
| Peg Murphy-Bright |
| Marilyn Nardone |
| Patricia Nardone |
| Penelope Nicolas |
| Helena Nulick |
| Jennifer Obrey |
| Susan Ogle |
| Alexander Ortega |
| Elizabeth Panciera |
| Daria Papalia |
| Beth A. Paretta |
| Fred P. Paretta |
| Annamaria Payoute |
| Carol-Jean "CJ" Plunkett |
| Susan Potter |
| Brenda Pukas |
| Dr. Robert J. Rafka |

- | |
|--|
| Lorraine Randall |
| David M. Rathbun |
| Dawn Rathbun |
| Eileen Rawnsley |
| Peter Robinson |
| Margaret C. Rocketto |
| Elaine Roman |
| Susan Rosen |
| Dr. Nina Rossomando |
| Ella Ryan |
| George Ryan |
| Maggie Ryan |
| Lee Sadosky |
| Deb Schwab |
| Mary E. Scialabba |
| Elizabeth Serra |
| Joan Sienkiewicz |
| Violet Spinelli |
| Annthea Spinosa |
| Richard Steadman |
| Colleen Sullivan |
| JoAnn Sullivan |
| Nancy Sutton |
| Kaylei Swanger |
| Ben Tamsky |
| Talia Temporal |
| Evelyn Thavenet |
| Geraldine L. Theodore |
| Peter Thompson |
| Louise H. Thorson |
| Gerry Tobin |
| Laura Tobin |
| Judy Toscano |
| Lou Toscano |
| Nolan Tripp |
| Janice Berchielli Tunney |
| Ruth Turečková |
| The URI Master Gardener Program |
| Jean Victor |
| Emily Ward |
| Washington Trust Reach for the Stars Program |
| Donald Weiss |

- | |
|-------------------|
| Mary Weiss |
| Gayle Wentworth |
| Rose Marie Weston |
| Kathy White |
| Eleanor Willis |
| Jane Wiltshire |
| Gwendoline Woods |
| Brenda Woodward |
| Donna Zuffelato |
| Robert Zuffelato |

*Deceased



Incorporators serve as liasons between Westerly Library and Wilcox Park and the communities of Westerly and Stonington. Incorporators also form the pool of candidates for the Board of Trustees. We thank you for your support!

Randolph Abood
 Suzanne D. Albert
 Dennis L. Algieri
 Leigh A. Algieri
 Fred A. Allardyce
 Kristy Allardyce
 Roberta Allardyce
 H. Margaret Anderson
 Kimberly G. Anderson
 Robert Anderson
 Richard C. Anthony
 Cynthia J. Arsenault
 Peter V. August
 Dianne T. Babcock
 Garrett P. Babij
 David R. Bailey
 Patricia J. Bailey
 Benjamin Barber
 Margaret S. Barclay
 David D. Bell
 Deborah L. Bell
 Ellen L. Bell
 Ida Benson
 Robert A. Benson*
 Maria Bernier
 Dickson G. Boenning
 Katherine A. Boll
 Thomas F. Boll
 Gail Bonner
 Mary E. Bowler
 Jennifer L. Brinton
 Marilyn F. Brockmann
 Diane J. Brown
 William S. Brown
 Desa D. Buffum
 Laurie J. Callaghan
 Carly Callahan
 Alison G. Cameron
 Valerie Camfield
 Susan S. Capalbo
 Andrea Carey

Sandra J. Carmichael
 Donna Celico
 John B. Coduri
 George A. Comolli
 Mallory M. Constantine
 Richard W. Constantine
 Beverly A. Conti
 John N. Conti
 Caswell M. Cooke, Jr.
 Margaret B. Corini
 Carol A. Crandall
 Alison L. Croke
 Betty-Jo Cugini
 Elizabeth C. Cugini
 David Culton
 Elizabeth A. D'Amato
 Kathleen P. Daniele
 Denise M. Daukas
 Harvey C. Demovick, Jr.
 Harvey C. DeMovick, III
 Jeanne I. DeMovick
 Marion H. Desillier
 Lorraine M. Devault
 April E. Dinwoodie
 Anne H. Driscoll
 Richard F. Dudley
 Susan M. Dumouchel
 Leslie S. Dunn
 Susan Dvorak
 Elizabeth B. Eckel
 Frederick C. Eckel, Jr.
 Meredith Eckel
 Edith B. Eglin
 Irma Federico
 Timothy G. Flanagan
 Mojie F. Friel
 Christopher M. Fusaro
 Jean L. Gagnier
 Mark W. Gagnon
 Anna Garceau
 Zachary Garceau

John J. Gentile, Jr.
 Robert J. Gervasini
 Dr. R. Bruce Gillie*
 Mary Jo Girard
 Charles A. Glew
 Kathleen Glew
 Susan Gomes
 Mary M. Goodman
 Stephen L. Goodman
 Stephen M. Greene
 Linda D. Grimes
 Doryanne Hamel
 Kristin Hamm
 David C. Hannon
 Joanne Harley
 Deborah M. Harold
 Scott J. Harold
 Pamela M. Heller
 Larry J. Hirsch
 Julie A. Holland
 Robert J. Holland
 Ardis Holliday
 R. Carter Holliday
 Gale S. Hunt
 Terry Hunt
 Frank Illuzzi
 Barbara N. Jandasek
 Christine S. Julian
 Kenneth J. Julian
 Adam S. Kaufman
 Mary Carol Kendzia
 Thomas Kendzia
 Lisa Kenyon
 Katherine B. Krystinik
 R. Paul Kuhn
 Darlene Lacey
 Shawn Lacey
 Ann Lain
 Gara LaMarche
 Arthur H. Lathrop
 Catherine Lathrop

John H. Lathrop
 Suzanne R. Lemp
 Judith E. Lentz
 Walter J. Lentz
 Florence R. Lewiss
 Matthew L. Lewiss
 Peter L. Lewiss
 Lori Liguori
 Robert E. Liguori
 Almedia M. Livingston
 Marguerite R. Long
 Carolyn G. Longolucco
 Clayton Lord, Jr.
 Susan W. Mackay
 Ellen L. Madison
 Malcolm A. Makin, Jr.
 Torey Malatia
 Robert J. Malley
 Marion Markham
 Carol S. Marsiglio
 Peter B. Martin
 Robert Marvel, Jr.
 Marianne McAllister
 Stephen P. McAllister
 Robert C. McCormack
 Jennifer Mellen
 Sue A. Melvin
 Corliss Merkel
 Elisabeth J. Mueller
 William F. Meyer
 William J. Miller, Jr.
 Helen G. Mochetti
 Lido J. Mochetti
 Alexandra Moore
 Ruth Foster Morgan
 Sharon L. Morgan
 Steven A. Morrone
 Margaret Murphy-Bright
 Marianne A. Nardone
 Marilyn B. Nardone
 Ian J. Newbury
 Kim A. Newbury
 Helena Nulick
 Paul Nunes

Jennifer Obrey
 Susan H. Ogle
 Mary Jo Orsinger
 Victor J. Orsinger
 Gary R. Palmer
 David J. Panciera
 Richard C. Panciera*
 Fred P. Paretta
 Andrew J. Parsons
 David Patten
 Mary-Kay Patten
 John R. Payne, Jr.
 John S. Payne
 Cynthia L. Perry
 Joseph H. Potter
 Bruce Prescott
 Anne M. Preuss
 Amy Randall
 H. Douglas Randall, III
 Lorraine Randall
 David M. Rathbun
 Gene S. Renz
 Susan B. Renz
 Paulette A. Retsinas
 Peter Robinson
 Margaret C. Rocketto
 Corinne E. Rossi
 Helen M. Roy
 Michael T. Ryan
 Candace Sanford
 Thomas D. Sanford
 David A. Sayles
 Steven W. Scales

Cynthia D. Sculco
 Susan I. Seeley
 Michael V. Serra
 Robert R. Simmons
 Charles S. Soloveitzik
 Endawnis M. Spears
 Lauren M. Sposato
 Nicholas J. Stahl
 Margaret Stamatias
 Justin J. Stevenson, III
 Michael Sujka
 Colleen Sullivan
 Olive P. Tamm
 Kathryn T. Taylor
 Evelyn S. Thavenet
 Neil H. Thorp
 Louise H. Thorson
 Judith F. Toscano
 Louis M. Toscano
 Ruth G. Tureckova
 Teresa C. Utt
 Raymond A. Uzasan
 Deborah W. Ventresca
 Andrea B. Verbois
 Katharine H. Waterman
 Donald Weiss
 Mary H. Weiss
 Rose Marie P. Weston
 Tara Whelan
 Laurence F. Whittemore, III
 Douglas R. Woodard

*Deceased



Westerly Library & Wilcox Park is honored to have the support of so many generous corporations, local organizations, grantors and individuals for various events and projects throughout the year.

Thank you to all our Annual Fund Donors. Your gift is a spark of opportunity for a greater tomorrow. We are honored and grateful to be a non-profit you believe in.

Event Sponsors

Peg Murphy-Bright & Richard Bright
 The Cannon Family
 Chariho Furniture
 Cherenzia & Associates, Ltd
 Dunns Corners Market
 First Financial Advisory Services, Inc.
 Friends of Westerly Library & Wilcox Park
 Stephen M. Greene & Betty-Jo Cugini
 Grey Sail Brewing
 Katherine W. Hoxsie
 Jewett City Savings Bank
 Lathrop Insurance
 McQuade's Marketplace
 Miceli's Furniture
 Moran Custom Homes LLC
 NDS Wealth Advisors
 Ocean House
 Ocean House Fund for Charitable Giving
 ParsonsKellogg, LLC
 Pawcatuck Roofing Company, Inc.
 Jack & Mabel Payne
 Professional Planning Group
 Red Stone, Inc.
 Riverhead Building Supply
 Tom & Candy Sanford
 Dorie Singer
 South County Distillers
 St. Edmund's Retreat
 Starkweather & Shepley Insurance
 The Washington Trust Company
 The Wine Store
 Vesta Bakery
 Westerly Community Credit Union
 Westerly Paints
 Westminster Advisory Group

Grants & Estate Gifts

The Albert E. Cofone Family Trust
 The Susanne Day Living Trust
 Clementina DeRocco Memorial Fund
 Gilbert Hicks, Jr. Trust
 The Jacqueline K. Hutcheon Trust
 The Thomas A. Ginty, Jr. Trust
 Mary C. Jolly Charitable Trust
 The Joseph J. Kirby Trust
 James F. McCormick, Jr. TUW
 Mr. & Mrs. Victor & Mary Jo Orsinger
 Preserve Rhode Island - The 1772 Foundation
 The Mary C. & Joseph E. Pucci Fund
 The Rhode Island Wild Plant Society
 Estate of D'Ann M. Sposato

Government Support
 Rhode Island Office of Library & Information Services
 State of Rhode Island Senate Grant
 Town of Stonington
 Town of Westerly

Program & Service Support
 Anonymous
 A&J Landscaping
 Arnold Lumber Company
 Bank Square Books
 Arbutus Garden Club
 Dr. & Mrs. Peter V. August
 Mr. & Mrs. Arthur W. Bingham IV
 Mr. & Mrs. Thomas F. Boll
 Mr. & Mrs. Scott D. Brown
 Mr. & Mrs. Robert C. Buffum, Jr.
 Paul Clark
 Mr. & Mrs. Joseph & Joan Coduri
 Ms. Susan Cornacchia
 Mrs. Susan Dvorak

East Beach Quonnie Garden Club
 Mojie F. Friel & Nicholas J. Stahl
 Friends of Westerly Library & Wilcox Park
 Mr. & Mrs. Andrew S. Gagarin
 Mr. & Mrs. Nelson Girard
 Golden Chopstix
 Stephen M. Greene & Betty-Jo Cugini
 Betty Griffin
 Mr. & Mrs. Larry J. & Kay P. Hirsch
 Mr. & Mrs. Grant & Suzan Hutchins
 Mr. & Mrs. Joseph & Angelina Iacoi
 Mr. Roy E. Jacobsen
 Jersey Mike's Subs
 Mr. & Mrs. David C. Johnson
 Mr. & Mrs. Kenneth & Christine Julian
 Mr. David S. Kirk
 Mr. & Mrs. Stephen & Marianne Lynner
 Ellen L. Madison, Ph.D
 Craig McKibben & Mel Mannion
 McQuade's Marketplace
 Ms. Jean A. Morosini
 Mystic Luxury Cinemas
 The Realini Family
 The Rotary Club of Westerly
 RI Daughters of the American Revolution - The Phebe Greene Ward Chapter
 Mr. & Mrs. Howard & Gayle Rothman
 Mr. & Mrs. James & Diane Schurman
 Thomas P. & Cynthia D. Sculco
 Ms. Charlene Senical
 South County Prevention, Coastline EAP
 Mr. & Mrs. John Spratt
 Pamela Stevens
 Ms. Sharon Tierney
 Washington Trust Charitable Foundation
 Kate Waterman
 Westerly Lions Club

Champion \$5,000+

Anonymous
 Mr. Mark T. Gallogly & Ms. Elizabeth B. Strickler
 Guy & Ann Garofalo Family Fund
 Mr. & Mrs. Roger C. Hamilton, The Hamilton Foundation
 Rob & Julie Holland
 Mr. Joseph P. Leone, Jr.
 Karin McCormick
 Susan & Peter Ogle
 Elizabeth G. Riley & Daniel E. Smith, Jr.
 Doris & Myron Saranga

Tower \$2,500 - \$4,999

Robin Marvel

Trustee Canopy \$1,000 - \$2,499
 Anonymous
 Mr. & Mrs. Jared & Bette Aaronson
 Mr. Peter J. Appleby & Ms. Stephanie Raia
 Ida Benson
 Mr. & Mrs. Richard Burke
 Sandi Carmichael & John Faulise
 Kay & Dick Daniele
 Mr. & Mrs. Paul Dewey
 Mr. & Mrs. T. Wilson Eglin
 Ruth Garcia
 Meredith & Whitney George
 Linda Griffin
 Helen A. Jankoski
 Thomas & Mary Raho Julian
 Lisa Mueller & Gara LaMarche
 Peter & Deborah Lamm
 Mr. & Mrs. Robert H. Lamson
 Jill & Bobby LeBlanc
 Loomis, Sayles & Company
 Ellen L. Madison, Ph.D
 Michael & Diane McQuade
 Mr. & Mrs. William F. Meyer

Warren & Bill Miller
 Nicholas C. & Allison M. Moore
 Mr. & Mrs. Denis & Britta Nayden
 Nicholas and Christina Raho Foundation
 Mr. & Mrs. William H. Nickerson
 Olympia Tea Room
 Tom & Seraphim D. Reycraft
 Peter & Jo Robinson
 Michael T. Ryan & Gayle Restivo
 Tom & Candy Sanford
 Richard H. Gregory, III & Louise H. Thorson
 Paul A. Verbinen & Cecilia Greene
 Marilyn S. & William H. White
 Edward Whittemore & Keri Brenner
 Mr. & Mrs. Laurence F. Whittemore, III
 Greg & Meme Wiber
 Gold Leaf \$500 - \$999
 Anonymous
 Mary & Mark Adiletta
 Senator & Mrs. Dennis L. Algieri
 Ashaway Charitable Trust
 Deborah & David Bell
 William & Eileen Bush
 Carly & Matthew Callahan
 Colleen Sullivan & Jack Cannon
 Mr. & Mrs. Peter A. Cawley
 Ronald Chernow
 John & Julie Coduri
 Richard & Mallory Constantine
 Elizabeth Courtney
 Carol & Les Crandall
 Daniel Cruger
 Mr. & Mrs. Harvey C. Demovick, Jr.
 David & Lorraine Devault
 Mr. & Mrs. Michael Doherty
 Mr. John P. Duffy
 J. Hap & Geren Fauth
 Mojie F. Friel & Nicholas J. Stahl

Ginger's Service Station, Inc.
 Mr. & Mrs. Charles Glew
 Maura & Will Goodwyn
 Ann B. Gray & James Royle
 Bob & Ami Green
 Kristin Thavenet Hamm & John Hamm
 David & Jane Hannon
 John & Janice Hardink
 Mr. & Mrs. Richard C. Holliday
 Hoyt, Filippetti & Malaghan LLC
 The Kaufman Family
 Jonathan M. & Margaret C. H. Kelly
 The Kopp Family Charitable Fund
 Ann Lain
 Katie & Brian McCormick
 Mr. & Mrs. M. Scott & Jennifer R. Mellen
 The Mitchell Family Fund
 Sharon Morgan
 Michael & Julie O'Brien
 Deirdre O'Connor
 Pfizer Foundation Matching Gifts
 Ms. Gigi Porcelli
 Luanne Rice
 Debbie & Joe Rucci Charitable Fund
 Thomas P. & Cynthia D. Sculco
 Mr. & Mrs. Anthony M. Soltis
 Dr. Deborah A. Spaight
 Mr. & Mrs. James Stifel
 Joseph J. Vuono
 Thomas R. & Nancy Rees Wall
 Langdon Wheeler & Katherine Metcalfe

Evergreen \$100 - \$499
 Anonymous
 Mrs. Ada Forgan Addington
 Richard & Dale Ahearn
 Jean D. Aiello
 Maggie & John Alden

**ANNUAL FUND
DONORS**

Susan Allyn
 Carol L. Amedeo
 Michael & Eliza Anderson
 Denzel & Shirley Andrews
 Arden Engineering Constructors
 Steven & Meredith Artigas
 Danielle Aube Pickett
 Sandra Avery
 Representative Samuel A. Azzinaro
 & Mrs. Carol Azzinaro
 Jon & Dianne Babcock
 Caroline Badowski & Scott Christy
 Mrs. Dorothy Baker
 Julie Barber
 Maisie Barlow
 Kimber Barnett
 Jason & Christopher Baughman-
 Opica
 Mr. & Mrs. Jonathan S. Bean
 Robert Belden
 Ellen L. Bell
 Carol Bennett
 Jeffrey P. Benson
 Drs. Cilla & Hillary Bercovici
 Barry Berger
 Francine Gouvin Bernard
 Maria & Marc Bernier
 Jeff & Jessie Bewlay
 Paula & Shaun Bilodeau
 Maria Bloom
 Mr. Karl H. Boehm
 Mr. & Mrs. Dickson G. Boenning
 Mr. & Mrs. Thomas F. Boll
 Lillian Bosio
 Mrs. Jane A. Boucher
 Mary E. Bowler
 Julia Bradford & Charles Warner
 Sandra Breck & Cameron Kelley
 Gilbert & Patricia Bricault
 Diane D. Brink
 Bristol Myers Squibb Foundation
 Alan & Mary Buck
 Mr. & Mrs. James & Deborah Burke
 Janet M. Burke

Joanna Burkhardt & F. Michael
 Wakefield
 Jane Burns
 Andrew & Julia Buteux
 Hillary Addington & Michael Cahill
 Mr. & Mrs. David K. Cahoone
 Erin Call & James Frink
 Robert & Laurie Callaghan
 Kristin & Joseph Capalbo
 Susan S. Capalbo
 Kelley Clairmont
 Tania Clark
 Evelyn & Stephen Cofone
 Richard & Sandra Cofoni
 James B. & Patricia L. S. Collins
 Dorothy M. Sculco Connolly
 Sara & Dan Connor
 Mary P. Conway
 Jeannette & Kenneth Cooper
 Mr. & Mrs. Steven Crandall
 Ms. Helen W. Cree
 John & Betsy Crosby
 Kim Cullinane Burns
 David & Geraldine Cunningham
 Thomas & Anne D'Amico
 Robert Darst
 Ms. Frederica Miller Davis
 Heather & Robert Davis
 Mr. & Mrs. Robert de Ciutiis, Sr.
 Pamela DeFanti Robinson
 Bob & Paula Delaney
 Mr. & Mrs. Andrew Delisio
 Mary Depasquale
 Jacquelyn Desmond
 Eric Dessaules
 Robin Block Devin
 Daniel Diffin, M.D. & Mrs. Victoria
 Diffin
 Mrs. Ellen E. Dodge
 Mr. & Mrs. J. B. Doherty
 Christopher Donohue
 Mr. & Mrs. Nicholas Du Biago
 Mr. & Mrs. Richard F. Dudley
 Marjorie H. Duerr

Louise & Alexander Dye
 Susan M. Eldridge
 Mr. & Mrs. Donald C. Ellis
 Stephen Elman & Joanne
 D'Alcomo
 Mr. & Mrs. Jeremy Emmet
 Fred & Barbara Engel
 Mr. & Mrs. Ellison Evans
 Maureen Fahy
 Mr. Joseph R. Falcone
 Rachel Fallon
 Carol & Ed Fazio
 Mr. Anthony Featherston & Dr.
 Helen M. Roy
 Jack & Marcia Felber
 Mr.* & Mrs. John Ferreira
 Mr. & Mrs. William & Nancy Fertig
 Donald J. Fiore
 Mel Rusnov & Jim Fitzpatrick
 Carol & AJ Fortier
 Patty & Ray Frosti
 Mr. & Mrs. Gary E. Fuller
 Furey Roofing & Construction
 Co., Inc.
 Gina Fusaro
 Jennifer & Jay Fusco
 Alessandro E. Fusina
 Deborah Gabinelle
 Mark & Rachel Gagnon
 Robin L. Gallagher
 John & Tammy Gathen
 Mr. & Mrs. Robert Gervasini
 Sarah Jane & Trevor Gibbons
 Kathleen GIBLIN
 Mrs. Polly Gillie
 Mr. & Mrs. Nelson Girard
 Mr. & Mrs. Thomas Godbout
 Diane Goldsmith & Linda Doran
 Katie Goode
 Anne M. Goodrich
 Mr. & Mrs. Hoyt Goodrich
 Stephen & Joanne Gowen
 The Graebner Family
 John & Karen Graham

William & Susan Gridley
 Ms. Debra Hanley
 Scott & Deborah Harold
 Patti & Rich Harper
 Thomas Harris & Maureen
 Coleman
 Mr. & Mrs. Michael J. Hayes
 Glen N. & Margaret M. Herbert
 Mr. & Mrs. Edwin S. Hetherington
 Jeffrey & Nancy Hoffman
 Mr. & Mrs. William Holland, Jr.
 Kathryn Holleran
 Alexandra Moore & Carter Holliday
 Brigitte & Justin Hopkins
 William D. & Phyllis J. Horne
 Martha McQ. Hosp
 Mr. & Mrs. Christopher M. Houlihan
 Stacey Jackson & Alex Nunes
 Mr. & Mrs. Douglas R. Jamieson
 Mr.* & Mrs. Melvin L. Jolly
 Catherine & Evan Jones
 Elizabeth Kavanagh
 Toby Kawulicz
 Elizabeth H. Keener
 Kelley's Deli
 Mary Carol & Tom Kendzia
 Jim & Fran Knapp
 Catherine G. Knight
 Janet & Stephen Knight
 Katherine Bell Krystinik
 Priscilla Lambert
 Mr. & Mrs. Laurence & Leslie
 Lambrecht
 Eleanor Deredita & William
 Lancellotta
 Angel & Ken LaVine
 Laura & Michael Lazarus
 Dr. & Mrs. Allen W. Leadbetter
 Richard & Antoinette Ledzian
 Andrew Lee
 Dr. & Mrs. Walter J. Lentz
 Rebecca Leong & Mark Drews
 Marilyn McShane Levine
 The Honorable Peter L. Lewiss

Amanda Lindberg
 Eric N. Lindquist
 LinkedIn
 Jane Lionelli
 Mr. Thomas Lloyd
 Thomas E. Long & Barbara T. Long
 Carolyn G. Longolucco
 Linda & George Luzzi
 Susie & John Mackay
 Grace & Robert MacKinnon
 Gail E. Mallard
 Daniel Mallett & Marie Claire Ged
 Rory Contin & John Malmros
 Mrs. Rona Mann
 Nick & Karen Manuzzi
 Jeffrey & Suzanne Marger
 Paul & Carol Marsiglio
 Mr. & Mrs. Hunter M. Marvel
 Sheelagh Masterson
 Mr. & Mrs. Ernest & Michele Mattei
 Steve & Marianne McAllister
 Thomas & Sandra McCall
 Barbara McCarthy
 Lisa & Jef McGill
 Gregory McNab
 Mr. & Mrs. Edward T. McPhee, Jr.
 Katherine Mears & Thomas
 Medeiros
 Katharine Merryweather
 Kathleen Meyer
 Liz & Steve Miller
 Mrs. Mary G. Mitchell
 Lido & Helen Mochetti
 Susan C. Moffett
 Chips & Liz Moore
 Dorothea B. Moore
 Steve & Ruth Morgan
 Mr. & Mrs. Marc & Lindsay Murphy
 Robert C. Murray & Sharon Bush
 Noel Muyskens & Armanda
 Famiglietti
 George & Deborah Myers
 Jean Nardone
 Philip T. Newbury

Judy Nichipor
 Paula Gingerella Niedermann
 The Nist Family
 David & Linda Nolf
 Victor Normand
 Gunilla B. Norris
 Carl & Kay Nowiszewski
 Helena & Richard E. Nulick, III
 Jennifer & Chad Obrey
 Justus O'Brien & Claire Werner
 Ms. Jane B. O'Connell
 Joe & Lynne Paino
 Gary R. Palmer
 Emilia A. Mascaro & Pauline R.
 Panatieri
 David & Elizabeth Panciera
 Valerie & Louis Pappadia
 Edward & Louise Parberry
 Penny Parsekian & Geoff Kaufman
 Andrew & Carol Parsons
 Joseph & Joan Patton
 Mr. & Mrs. John R. Payne, Jr.
 Leah & Todd Peavey
 Larry & Linda Peduzzi
 Helen M. Pendleton
 Ann & Hollis Petersen
 Mr. & Mrs. Robert A. Petro
 Patrick & Mary Piccolo
 Sam & Rachel Pierson
 Evan Preisser
 Premier Physical Therapy LLC
 Anne M. Preuss
 Professional Planning Group
 Richard Raczowski
 Lorraine & Doug Randall
 Jim & Lisa Rattray
 Eileen Rawnsley
 Robert & Polly Ray
 The Realini Family
 Dave & Cathy Redman
 Mac & Tracy Regan
 Susan & Gene Renz
 Patricia Richins

The Richard J. & Barbara L.
Richmond Fund
Ms. Donna Rines
Julia Risica
Margaret C. Rocketto
Edith Rose
Katherine Rosen
Drs. Nina & Edward Rossomando
Mr. & Mrs. Ralf & Carmiña Roth
Kimberlie Rayner-Russell
Rob Russell & Jill Blanchette
Mr. & Mrs. Hugh M. Ryan
Margaret Sano
Mrs. Marylou Thorpe Savoy
Mr. & Mrs. David A. Sayles
Bob & Nancy Schachner
Joan Rosenthal & Frederick Schiff
Sylvia Picard-Schmitt & John
Schmitt
Stephen & Marilyn Schultz
Nick & Jill Scola
Mr. Gilbert Scott, Jr.
Fred & Anne Sculco
Darryl Sentell
Dr. & Mrs. Robert M. Serra
Mr. & Mrs. Deming Sherman
Jim & Cindy Sia
Mr. & Mrs. Richard P. Siciliano
John Sidoli
Dr. & Mrs. Isaac Silverman
Dorothy Skrincosky
Diane & Tom Smith
Elizabeth M. Smith
Starr & Philip Snead
Mr. & Mrs. Colby Snyder
John & Nancy Socha
Solace Nutrition, LLC
Stephanie & Jim Sorenson
Lois & Joe* Soucy
Geraldine S. Spillane
Joyce Y. Stahl
Ron Stecker
Clifford & Mary Stehle
Elaine Bookataub Steidle

Kathleen Stepanian
Monica Sutcliffe
Mr. & Mrs. Kenneth F. Swain
Elissa Sweet
Terry & Alison Tarallo
Kathryn T. Taylor
Karen Hanson & Frank Thacker
The Family of Louis* & Evelyn
Thavenet
Ms. Geraldine L. Theadore
Thermo Fisher Scientific
Christina Tilt
Gerry & Laura Tobin
Henry & Barbara Toolan
Charles & Bette Toscano
Lou & Judy Toscano
Mr. & Mrs. John Townsend
Matthew & Megan Tracey
Maura Travers
Mr. & Mrs. Arthur E. Trotman
Leslie Tryon & J. Riley Fowler
Claudia Uccellani
Kara Unterberg
Lori & Charlie Vacca
Mrs. Deborah Vaillancourt
Joanna & Albert Valentini
Lois Vars
Mr. & Mrs. Scott A. Vincens
Stephen & Elise vonHousen
Xavier & Kim Vorilhon
Jeffrey & April Vuono
Warburg Pincus Foundation
Mrs. Elizabeth S. Wattles
Alan & Ellen Weiner
Steve Weiss
Heidi Steinmetz & Jay Weissman
Mr. & Mrs. John R. Werner
Westerly Community Credit Union
Mrs. Howard E. Weston
Dr. Tara Whelan
Barbara C. Whitford
Jill & Christopher Wight
Patricia & Thomas Wildman
Jeanne & John Wilks

Tram Williams
Glenna C. Wilson
Winnapaug Country Club
Christopher & Melissa Wood
Lyn Wood
Mr. & Mrs. David Woyak
Ernest & Barbara Wright
Joan Yokow
Sylvia Blanda & Walter Young

Perennial \$1 - \$99

Anonymous
Patricia Abate
Audrey Adam
Joann & John Adriano
Mrs. Katherine Aiello
Richard & Karen Aiken
V. M. Algiere
Daniel W. Alvino
Mr. & Mrs. Richard S. Anastasia
Mrs. Elizabeth Anderson
Jim & Carol Angelo
Dr. & Mrs. Peter V. August
Mary & John Auth
Tom & Pat Baker
Debbie Banahan
Catherine M. Barber
Margaret S. Barclay
Mr. & Mrs. Donald D. Barrea
Leslie K. Bartholomew
Shirley Bartucca
Andrew Beaudry
Lisa J. Bedard
Mr. & Mrs. Ron Bedard
Mr. & Mrs. Fred Beddard
Donna S. Benton
Patricia M. Berardo
Stephanie Blanchette
William & Barbara Bliven
Robert & Elaine Boissevain
Helen L. Bommer
Mr.* & Mrs. Donald S. Bossey
Diane C. Bowdy
Bruce & Sara Brawley

Mr. & Mrs. William J. Brennan
Linda Brenner & Tony Green
Marcia & Howard Brensilver
Susan & Joseph Brocato
Mrs. Marilyn F. Brockmann
The Brown Family
Philip & Jennifer Bryan
Mary Ellen Buckley & Philip Garlo
Jane Buffum
Jim & Dee Dee Buffum
Carolyn Burkhardt
The Burns-Fusaro Family
Matthew Bussell
Frances & Daniel Cameron
William Campbell
Richard J. Capezzano
David & Kathleen Capizzano
Marco Carega
Andrea Carey
Steve Castagliuolo
Ms. Lauren K. Chiaradio
Kristofer Christakos
Rose Marie Christina
David & Evie Church
Marie Clark
Sara & Bobby Clark
Christine Clifford
Carol D. Comeau
Jim & Marie Congdon
Gerald Conroy
Mary Cooper
Susan Cornacchia
Mrs. Charlotte Cottrell
Margaret & Lint Crandall
Elizabeth Cugini
John & Virginia Currie
Dale DeGroff Company, Inc.
Dennis Danaher & Catherine
Waters
Paul D'Andrea
Paul F. Dantuono
Charles J. Delmonte
Mrs. Charles S. Desillier
Mark Diekmann

Raven DiMario
Tara F. DiMuccio
David* & Carlene Donnarummo
Joseph Donohue &. Deborah
Burlingame
Julie Donovan & Joseph Long
Leticia Dorsa
Don & Donna Doucette
Susan Dowd
Mr. & Mrs. Denis & Diane Duclos
Mr. Todd K. Dumas
Linda Dupré
Marc Ekstrand
Shaun & Alicia Erickson
Ann & Jon Ericson
David & Marcia Erskine
Andrew & Wendy Faiss
Barbara Fallon
Mr. John B. Farley
Jim & Michele Fasi
Alan & Donna Feir
Bill & Sharron Ferguson
Bernard Fermini
Ted Ferragut
Marjorie Fine
Philip J. Fitzpatrick
Katie Fleet
James & Brenda Foberg
Mrs. Joan Foberg
Mrs. Tia Forbes
Scott T. Frankel
The Fratoni-Jaskiewicz Family
Joshua S. Freeman
Stephen & Lori Freitas
Marlene J. Fridel
Phil Friend
The Galligan Family
Toscano's Mens Shop
Robyn & Ed Generali
Joan & Thomas Gilbert
Mara Gillen Beckwith
Robert & Anne Marie Gizzarelli
Ms. Sandi Gold
Joyce Gonthier

Marilyn Graham
Mr. George Grande
John & Theresa Gregal
Peter & Susan Griggs
Sandra & John Gulino
Christopher Hanlon
David & Gisela Harma
S. Hathaway
Karie A. Hayes
Joanne M. Haytaian
Judith Hellert
Eileen P. Higgins
Larry J. & Kay P. Hirsch
Jennie Hirst
Kimberly L. Houde
Alice Howell
Lizanne Johnson
Dorothy A. Kettlety
Ellen Knizeski
Mark Kuhn
Mr. Frank Kunc, Jr.
M. Ann Lamb*
Nancy D. Lamb
Mr. & Mrs. Chester C. Lamphere, Jr.
Gail & Bob Lansing
Mrs. Mary LaPere
Lois Ann Larkin
Dr. & Mrs. David H. Larson
Gary & Susan Latz
Elaine Laurenzo
Ms. Kelly A. Lee
John & Brenda Linton
John & Almedia Livingston
Janet M. Loffredo
Maureen Logan
Mr. & Mrs. Stephen E. Lombardi
Mr. & Mrs. Edward Lunaas
Diane & Mark Maleno
Beth Manning
Louis Manzi
Mary Ann Marcotte
Craig Martin
Mr. Paul Martin
Peter McCormick



The Wilcox Society honors our generous donors who have made a gift to the endowment fund or for those who have included the Association in their wills. These gifts leave a lasting legacy and provide a meaningful opportunity for donors to make a transformational gift after they have left us.

- | | |
|---|--|
| Anonymous | Mr. & Mrs. Robert & Mary Jane* Marvel |
| Mr. Richard A. Bavasso & Mrs. Susan Alfiero-Bavasso | Mr. & Mrs. Stephen & Ruth Morgan |
| Mr. & Mrs. David D. & Deborah L. Bell | Mr. & Mrs. Victor J. & Mary Jo Orsinger |
| Mr. & Mrs. Marc & Maria Bernier | Mrs. Marion S. Palm |
| Mr. & Mrs. David A. & Louise Ann* Brown | Mr. Gary R. Palmer |
| Mr. & Mrs. William S. & Diane Brown | Mr. David M. Rathbun |
| Mr. & Mrs. Richard & Kathleen Daniele | The Realini Family |
| Susanne Day* | Mr. John R. Rudert, Jr. |
| Dr. & Mrs. A. John* & Judith Elliot | Michael T. Ryan & Gayle Restivo |
| Ruth & Ramon* Garcia | Mr. & Mrs. David A. & Valerie Sayles |
| Thomas A. Ginty, Jr.* | Dr. & Mrs. Thomas P. & Cynthia D. Sculco |
| Stephen M. Greene & Betty-Jo Cugini | Mr. & Mrs. John* & Sylvia Severance |
| David & Jane Hannon | Ms. Cynthia Spano |
| Mr. & Mrs. Larry J. & Kay P. Hirsch | D'Ann M. Sposato* |
| Mr. & Mrs. William* & Jacqueline* Hutcheon | Ms. Kathryn T. Taylor |
| Mr. & Mrs. Fouad & Eugenié* Janat | Mr. & Mrs. Louis* & Evelyn Thavenet |
| Joseph J. Kirby* & Katherine W. Hoxsie | Matthew H. Thomsen & Adrienne N. Hall |
| Kurt & Mary* (Peduzzi) Lenzen, WHS Class of 1971 & 1973 | Ms. Janice Berchielli Tunney |
| Mr. Joseph P. Leone, Jr. | Jaclyn A. Udaloff |
| Mr. & Mrs. William & Susan Lepak | Abigail Van Slyck & Mitchell Favreau |
| The Honorable Peter L. Lewiss | Beverly Vilardofsky |
| Ellen L. Madison, Ph.D. | Mr. & Mrs. Gregory Wiber |

*Deceased



- | | |
|---------------------------------------|---------------------------------------|
| Pamela J. McDonald | Kaitlin Rengigas |
| Debra C. McDougall | Ms. Loren M. Renz |
| Mr. & Mrs. John D. McGregor, Jr. | Mr. & Mrs. Eric Ridder, III |
| Mary Lynn & Michael McRee | Mr. & Mrs. Thomas R. Rippstein |
| Mr. & Mrs. O. Waring Mellick, Jr. | Elaine Roman |
| Judith Merrill | Sherry Romans |
| Nikki Mills | Mr. & Mrs. Peter Romeo |
| John & Kathleen Monroe | Carl & Susan Rosen |
| Hugh & Emily Morgan | Sandra & William Rosen |
| Aaron & Nancy Morrone | Patti Ross |
| Jaclyn Moxham | Lin Rutan |
| Bill & Eileen Murphy | Mr. & Mrs. Antonio M. Saez |
| Lucinda Murphy | Mr. & Mrs. Paul Sandor |
| Mark Murphy & Regina Alexander | Tom & Liz Santoro |
| Anne H. Nalwalk | Susan Scala |
| Linda Neiberg & Alfred Lippincott | Christine Schell |
| Chester & Linda Niedbala | Glenn & Pamela Scheller |
| Jennifer Norcross | Edward & Nancy Schilke |
| Joseph C. Noyes IV | Janet & Joseph Sczupak |
| Barbara & John Oberle | The Serio Family |
| Sara A. Panciera | Michael & Joan Serra |
| Donna Parker | Mr. & Mrs. Geoffrey Sewall |
| Mr. & Mrs. John J. Partridge | Dr. Gail A. Shea |
| Donald F. Pasetti | Jack Shippee & Patty Crandall Shippee |
| Alan Peavey | Janice & David Sieser |
| Mr. & Mrs. Alan Peck | June G. Silvestri |
| Mary Pellegrino | Bob & Jeanie Simmons |
| Linda Philips | Joanne M. Sloneker |
| Denise & Chris Pierson | Mrs. Ann H. Snowden |
| Jo Ann Pietraallo | Paulla & Neil Solar |
| David Pietraszka | Charles & Georgia Soloveitzik |
| Kathy Pitcher | Tammy Souza |
| The Pizza Lady | Laura Spizziri |
| Alicia Podann | Debra & Mark Sposato |
| David & Marie Popielarczyk | Louis P. Sposato |
| Daniel Potter & Marya Ursin | Maria Sposato |
| Nancy Ellingwood & Thomas Powers, Jr. | Margaret & John Stamatis |
| Marge Puhlick | Susan & Kenneth Stevens |
| Mary G. Raftery | Mr. & Mrs. James Stewart |
| Chris Reale | Stop & Shop |
| Tracy A. Reall & Dennis Reall, Jr. | Mrs. Loretta Strafach |
| Cheryl A. Remsbecker | Symetra Community Giving |
| Chaohua Ren | Judith & Steven Symington, Jr. |

- Linda Tessman Laudone
 Laurel Tewes
 Heather Thibdeau
 Lynnne & Aaron Thieme
 Bill & Sandra Thornton
 Ray & Jeannie Tomao
 Mr. & Mrs. Joseph P. Toscano, Jr.
 The Troupe Family
 Ms. Victoria Tsang
 Mr. & Mrs. Robert L. & Nancy M. Turco
 Nancy & John Turrisi
 John & Margaret Tyler
 Dennis & Susan Urra
 Mr. & Mrs. Gerard Ventresca
 Patricia M. Walbam
 Elizabeth D. Walker
 The Wallace Foundation
 Dawn & Daniel Webster
 Duncan G. Welch
 Nancy R. West
 Karen West-Federico
 Mr. & Mrs. Robert Whalen
 Troy Williams
 Raymond & Eleanor Willis
 Wiquapaug Eastern Pequot Indian Tribe
 Anne M. Yeakey
 Steven & Mary Jane Yolen
 Pamela J. Young
 Debra Zima
 Wil & Jane Zurliene

*Deceased





We would like to take a moment to remember former Incorporators, Trustees, volunteers and Friends who have passed away this fiscal year.

Incorporators

Joseph J. Kirby | July 2023

Giving back to the community was an integral part of Joe’s life. He provided leadership and guidance to many organizations. Joe served on the Board of Trustees for Westerly Library & Wilcox Park as well as Westerly Hospital, and also served on the Westerly School Committee. He was also a member of the Wilcox Society, the Association’s planned giving society. He assisted many capital campaigns and annual fund drives including the United Way, Catholic Charities, South County Community Action and the Ocean Community YMCA.

Richard C. Panciera | July 2023

Richard volunteered his time with many organizations such as the Hope Valley Fire District, the Chamber of Commerce, and the Westerly Land Trust. He served as an Incorporator for Westerly Library & Wilcox Park from 2015 until his passing and he regularly participated in Ocean Community Collaborative gatherings at the library, where he enjoyed conversing with local nonprofit leaders.

Robert A. Benson | October 2023

Bob was a beloved member of the Westerly Library & Wilcox Park community, where he was a friend to staff, volunteers, and patrons. He served as a member of the Board of Trustees for many years and was President from 1994-1996. Later, he served on the Board for the Friends of Westerly Library & Wilcox Park as well. He was an Incorporator for decades until his passing and served on the Wilcox Park Committee. He was an avid reader and enjoyed volunteering at the Friends annual book sales. He was also interested in local history and served as Board President for the Westerly Historical Society. He assisted in research and writing for the library’s 125th anniversary history book. In 2008, he was presented the Gold Leaf Award for his significant contributions to Westerly Library & Wilcox Park.

Dr. R. Bruce Gillie | October 2023

Dr. Gillie served the community as a family physician and endocrinologist for over 40 years. He was also a renowned naturalist and he lectured widely on a variety of subjects. He served as an Incorporator and a member of the Friends of Westerly Library & Wilcox Park for many years.

M. Ann Lamb | January 2024

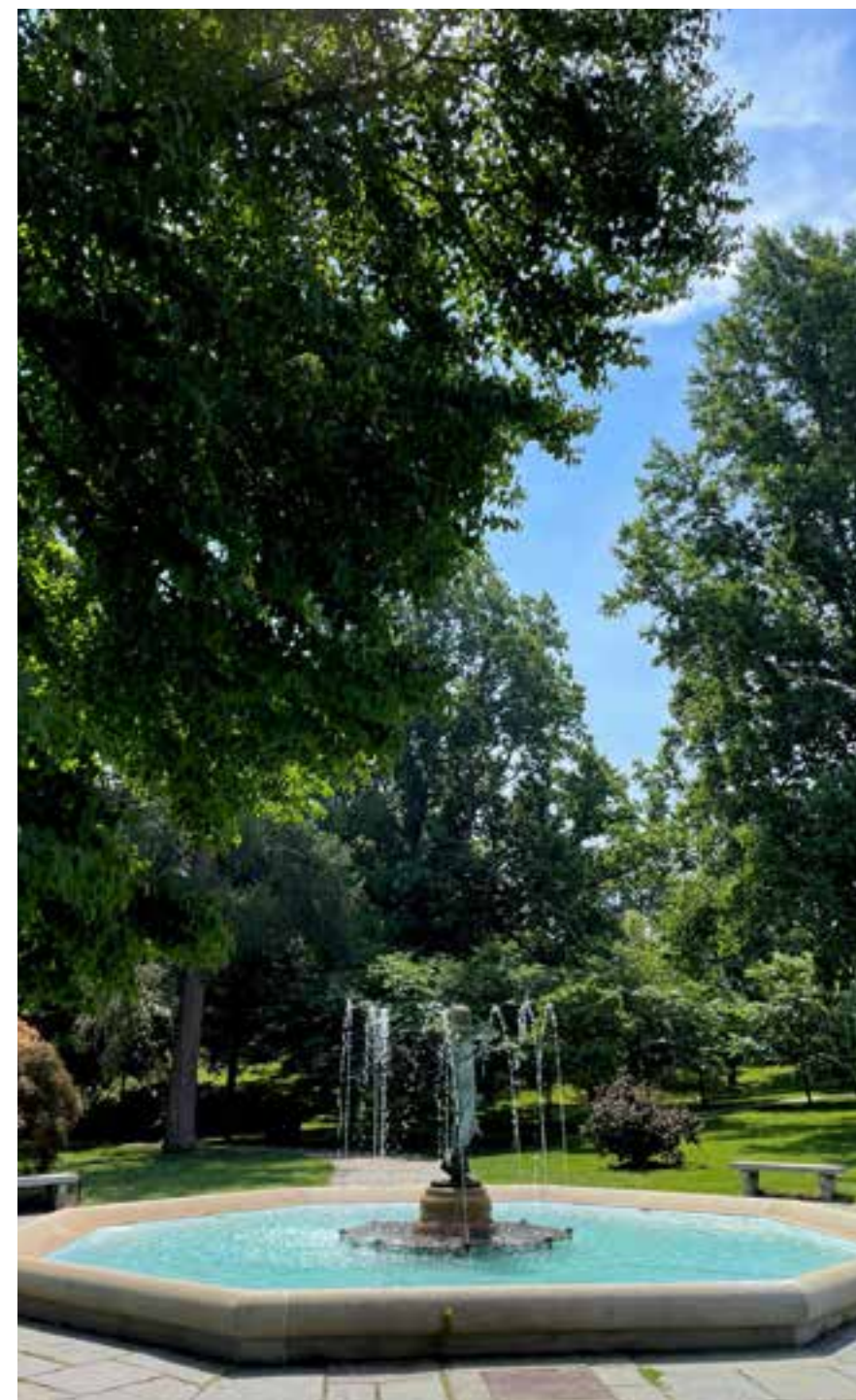
Ann was an active parishioner of St. Pius X. church where she was a former choir member and former President of the Rosary and Altar society and secretary for the Town of Westerly, Planning board for 25 years. She served as an Incorporator and a member of the Friends of Westerly Library & Wilcox Park.

Volunteers

Carol H. Maynard | December 2023

Carol was a volunteer at the annual Friends Book Sale well into her 90s. She supported many organizations in addition to Westerly Library & Wilcox Park, including Westerly College Club and Daughters of the American Revolution.

The individuals listed above passed away between July 1, 2023 and June 30, 2024. Every effort was made to ensure a complete list, but please notify us of any corrections or omissions.





WESTERLY LIBRARY
& WILCOX PARK